

## Skirt

Manuel Vivian

Collezione di lampade da soffitto e a sospensione con paralume in tessuto riciclato. Disponibile in varie dimensioni e colori, anche con tessuto esterno retato nero.

Collection of ceiling and suspended lamps in recycled fabric, available in several sizes and colours. The fabric can also come in a double-layer version with an exterior black net fabric.

prodotto fonoassorbente / sound absorbing product



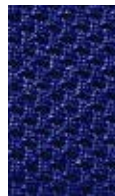
## COLOURS



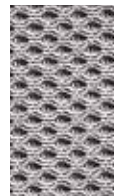
white



orange



blue



light grey



red



light green



black net cover fabric (optional)

## INTERNAL DIFFUSER



white

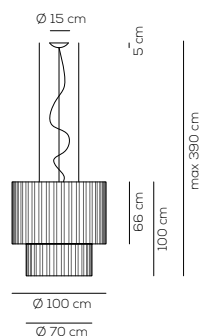


white canopy

Altri colori disponibili su richiesta / Other colors available on request.

## SP SK 100 2

kg 18 m³ 1,06



SKIRT / diffusore INCLUSO, con illuminazione verso alto e basso *diffuser INCLUDED, with upward and downward*

Type	Article	Exterior Net	Fabric Colours	Source
SP	SK 100 2 E27	XX no black net	BC white	E27 4 x Max 17,5W LED or 4 x Max 70W halogen
		NE black net	AR orange	
			BL blue	
			GR light grey	
			RS red	
			VE light green	

CE IP20 +LED 220-240VAC

example composition code SP SK1002E27 XX BC

Equivalent Sound Absorption Area (A) in m<sup>2</sup> per lamp

FREQUENCY	125 HZ	250 HZ	500 HZ	1000 HZ	2000 HZ	4000 HZ	8000 HZ	125-8000 HZ	500-2000 HZ
A	0,32	1,17	1,58	1,81	1,98	2,21	3,31	1,77	1,79

Equivalent Sound Absorption Area (A) in m<sup>2</sup> per lamp (with black net)

FREQUENCY	125 HZ	250 HZ	500 HZ	1000 HZ	2000 HZ	4000 HZ	8000 HZ	125-8000 HZ	500-2000 HZ
A	0,47	0,98	1,67	2,23	2,49	2,78	4,03	2,09	2,13



SP SK 1002 E27\_ \_ \_ \_

CUSTOMER \_\_\_\_\_ NOTES \_\_\_\_\_

NOTICE: Luminous flux (lm) and efficacy (lm/W) for all LED luminaires is estimated based on nominal ratings of the LED sources. Technical data could be subject to alteration without notice. Axo Light does not provide legal guarantee for the accuracy of this data sheet.